

**Stainless Steel Low Pressure Pipe Fittings -
HEX. NIPPLE
DATA SHEET
ZL-S8504 Series**



Description

BrBrought to you by ZL, a series of stainless steel threaded fittings, suitable for applications requiring a secure and reliable pipe connection. Heavily used within the plumbing industry, water and gas will flow through in a tightly sealed construction.

These fittings are made from a durable 316 stainless steel and incorporate a hexagon nipple to ensure a simple and secure connection for pipe and hose work. All models are highly reliable and excellent quality.

Available in a variety of sizes:

S8504-1/4"M*1/4"M-01
S8504-3/8"M*3/8"M-01
S8504-1/2"M*1/2"M-01
S8504-3/4"M*3/4"M-01
S8504-1"M*1"M-01
S8504-1 1/4"M*1 1/4"M-01
S8504-1 1/2"M*1 1/2"M-01
S8504-2"M*2"M-01

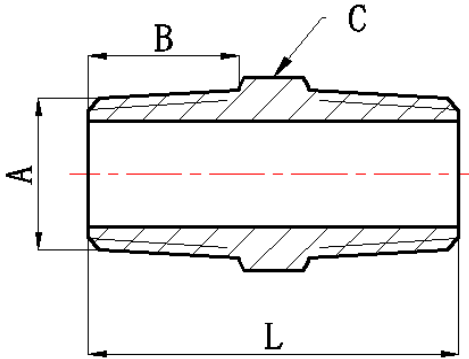
FEATURES

- ∞ 316 Stainless steel construction
- ∞ 150lbs fittings
- ∞ With BSPT tapered screw end
- ∞ Hexagon Nipple is made from S/40 pipe

General Specifications

Connection 1	1/4 in to 2 in R Male
Connection 2	1/4 in to 2 in R Male
Shape	Hexagon
Fitting Type	Nipple
Connection Gender 1	Male
Connection Gender 2	Male
Thread Standard 1	R (Taper)
Thread Standard 2	R
Material	316 Stainless Steel
Application	All throughout the home (bathroom, kitchen etc.)Any building with running water, heating or gas; Sewage and underground networks; Ships and boats; Car engines

Dimensions



Code	A	B	C	L	Weight(g)
ZLS8504DN08	R1/4"	13.5	Sw15	33	21.2
ZLS8504DN10	R3/8"	14.5	Sw18	36	30.5
ZLS8504DN15	R1/2"	16.5	Sw22	41	45.0
ZLS8504DN20	R3/4"	17.5	Sw28	44	66.0
ZLS8504DN25	R1"	19.5	Sw35	49	103.5
ZLS8504DN32	R1 1/4"	21	Sw44	53	157.4
ZLS8504DN40	R1 1/2"	21.5	Sw50	55	197.0
ZLS8504DN50	R2"	25	Sw62	63	302.5