

**Stainless Steel Low Pressure Pipe Fittings -
HOSE TAIL (HOSE NIPPLE)
DATA SHEET
ZL-S8510 Series**



Description

Brought to you by ZL, a series of stainless steel threaded fittings, suitable for applications requiring a secure and reliable pipe connection. Heavily used within the plumbing industry, water and gas will flow through in a tightly sealed construction. These pipe fittings are made from a durable 316 stainless steel material and are available in various sizes to make sure there's a perfect fit. All models are highly reliable and excellent quality.

Available in a variety of sizes:

S8510-1/4"M*8-01
S8510-3/8"M*10-01
S8510-1/2"M*13-01
S8510-3/4"M*20-01
S8510-1"M*25.5-01
S8510-1 1/4"M*32-01
S8510-1 1/2"M*40-01
S8510-2"M*51.5-01

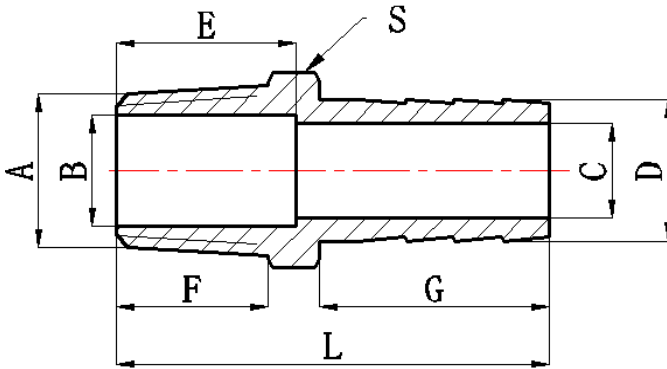
FEATURES

- ∞ 316 Stainless Steel hose nipple, fully threaded
- ∞ 150lbs fitting
- ∞ Screwed BSPT (Tapered) connection
- ∞ Barbed hose tail connection
- ∞ Various sizes, from 1/4" (8mm) up to 2" (51.5 mm)

General Specifications

Connection 1	1/4 in to 2 in R Male
Connection 2	8mm to 51.5mm Barbed Male
Shape	Hexagon
Fitting Type	Hose Nipple
Fitting Direction	Straight
Connection Gender 1	Male
Connection Gender 2	Male
Thread Standard 1	R (taper)
Material	316 Stainless Steel
Application	All throughout the home (bathroom, kitchen etc.)Any building with running water, heating or gas; Sewage and underground networks; Ships and boats; Car engines

Dimensions



Code	A	B	C	D	E	F	G	L	S	Weight(g)
ZLS8510DN08	R1/4"	Φ8	Φ4.7	Φ8	15.5	12.5	24	43.5	SW15	20.0
ZLS8510DN10	R3/8"	Φ11	Φ6.5	Φ10	16.5	13	27	48.5	SW18	29.4
ZLS8510DN15	R1/2"	Φ15	Φ9.8	Φ13	20	16	32	56.5	SW22	48.0
ZLS8510DN20	R3/4"	Φ20.5	Φ15	Φ20	21.5	17	39	65.5	SW28	81.0
ZLS8510DN25	R1"	Φ26.8	Φ19.5	Φ25	24.5	19.5	43	72.5	SW35	130.0
ZLS8510DN32	R1 1/4	Φ35	Φ27	Φ33	25.5	20	52	84	SW44	212.5
ZLS8510DN40	R1 1/2"	Φ40	Φ34	Φ40.5	28	22	55	88.5	SW50	285.0
ZLS8510DN50	R2"	Φ51.5	Φ44	Φ51	31.5	25	58	96	SW62	434.4